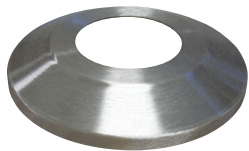
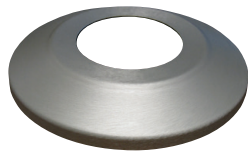


FLAGPOLES | Flash Collars (Not Split)

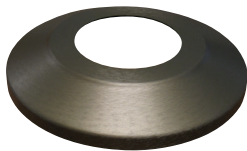
STANDARD PROFILE ALUMINUM FLASH COLLARS WITH .060" WALL THICKNESS



SATIN



CLEAR



BRONZE



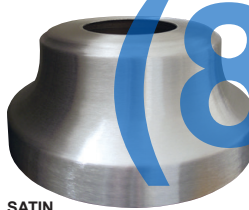
BLACK



WHITE

The chart below contains the combinations most commonly requested. For other combinations please contact us. 5" x 12" flash collars shown above. Flash collar shape may vary depending on pole diameter & outside diameter.

POLE DIA.	OUTSIDE DIA.	HT.	LBS.	SATIN			CLEAR			BRONZE #313			BLACK			WHITE		
				ITEM #	1-5	6+	ITEM #	1-5	6+	ITEM #	1-5	6+	ITEM #	1-5	6+	ITEM #	1-5	6+
2"	8"	2 1/4"	.50	370000	\$28.00	\$25.50	320064	\$34.00	\$31.00	370048	\$35.00	\$32.00	370073	\$48.00	\$43.00	370098	\$35.00	\$32.00
2 3/8"	8"	2 1/4"	.45	370001	28.00	25.50	370025	35.00	32.00	370049	35.00	32.00	370074	48.00	43.00	370099	35.00	32.00
2 1/2"	8"	2 1/4"	.45	370002	28.00	25.50	320065	34.00	31.00	370050	35.00	32.00	370075	48.00	43.00	370100	35.00	32.00
2"	12"	1 3/4"	.80	370003	34.00	31.00	370026	48.00	43.00	370051	48.00	43.00	370076	53.00	49.50	370101	48.00	43.00
2 3/8"	12"	1 3/4"	.80	370004	34.00	31.00	370027	48.00	43.00	370052	48.00	43.00	370077	53.00	49.50	370102	48.00	43.00
2 1/2"	12"	1 3/4"	.80	370005	34.00	31.00	370028	48.00	43.00	370053	48.00	43.00	370078	53.00	49.50	370103	48.00	43.00
3"	12"	1 3/4"	.85	370006	34.00	31.00	370029	48.00	43.00	370054	48.00	43.00	370079	53.00	49.50	370104	48.00	43.00
3 1/2"	12"	1 3/4"	.80	370007	34.00	31.00	370030	48.00	43.00	370055	48.00	43.00	370080	53.00	49.50	370105	48.00	43.00
4"	12"	1 3/4"	.75	370008	34.00	31.00	370031	48.00	43.00	370056	48.00	43.00	370081	53.00	49.50	370106	48.00	43.00
4 3/8"	12"	1 3/4"	.75	370009	34.00	31.00	370032	48.00	43.00	370057	48.00	43.00	370082	53.00	49.50	370107	48.00	43.00
5"	12"	1 3/4"	.75	370010	34.00	31.00	370033	48.00	43.00	370058	48.00	43.00	370083	53.00	49.50	370108	48.00	43.00
5 1/2"	12"	1 3/4"	.70	370011	34.00	31.00	370034	48.00	43.00	370059	48.00	43.00	370084	53.00	49.50	370109	48.00	43.00
6"	12"	1 3/4"	.65	370012	34.00	31.00	370035	48.00	43.00	370060	48.00	43.00	370085	53.00	49.50	370110	48.00	43.00
5"	16"	2 1/8"	1.4	370633	59.00	55.00	370634	75.00	68.00	370635	75.00	68.00	370636	86.00	79.00	370637	75.00	68.00
6"	16"	2 1/8"	1.4	370013	59.00	55.00	370036	75.00	68.00	370061	75.00	68.00	370086	86.00	79.00	370111	75.00	68.00
7"	16"	2 1/8"	1.4	370014	59.00	55.00	370037	75.00	68.00	370062	75.00	68.00	370087	86.00	79.00	370112	75.00	68.00
8"	16"	2 1/8"	1.3	370015	59.00	55.00	370038	75.00	68.00	370063	75.00	68.00	370088	86.00	79.00	370113	75.00	68.00
7"	22"	3 5/8"	2.5	370016	119.00	109.00	370039	153.00	141.00	370064	153.00	141.00	370089	166.00	150.00	370114	153.00	141.00
8"	22"	3 5/8"	2.7	370017	119.00	109.00	370040	153.00	141.00	370065	153.00	141.00	370090	166.00	150.00	370115	153.00	141.00
10"	22"	3 5/8"	2.9	370018	119.00	109.00	370041	153.00	141.00	370066	153.00	141.00	370091	166.00	150.00	370116	153.00	141.00
8"	30"	4 1/4"	5.9	370019	285.00	258.00	370042	366.00	336.00	370067	366.00	336.00	370092	381.00	345.00	370117	366.00	336.00
10"	30"	4 1/4"	5.4	370020	285.00	258.00	370043	366.00	336.00	370068	366.00	336.00	370093	381.00	345.00	370118	366.00	336.00
12"	30"	4 1/4"	5.3	370021	285.00	258.00	370044	366.00	336.00	370069	366.00	336.00	370094	381.00	345.00	370119	366.00	336.00
8"	38"	4 3/4"	7.5	370022	712.00	633.00	370045	792.00	712.00	370070	792.00	712.00	370095	856.00	771.00	370120	792.00	712.00
10"	38"	4 3/4"	6.9	370023	712.00	633.00	370046	792.00	712.00	370071	792.00	712.00	370096	856.00	771.00	370121	792.00	712.00
12"	38"	4 3/4"	6.7	370024	712.00	633.00	370047	792.00	712.00	370072	792.00	712.00	370097	856.00	771.00	370122	792.00	712.00



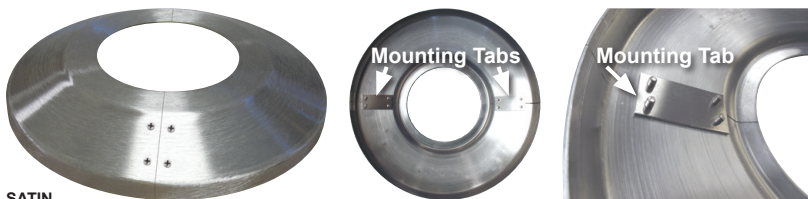
SATIN

HIGH PROFILE 'TRUMPET' ALUMINUM FLASH COLLARS

Trumpet collars are generally used with flagpoles where a shoe base is welded to the bottom; however, these collars can be used on standard in-ground mounted flagpoles if a higher profile is desired. Supplied in a standard wall thickness of .060". The chart below contains the combinations most commonly requested. For other combinations please contact us.

POLE DIA.	OUTSIDE DIA.	HT.	LBS.	SATIN			CLEAR			BRONZE #313			BLACK			WHITE		
				ITEM #	1-5	6+	ITEM #	1-5	6+	ITEM #	1-5	6+	ITEM #	1-5	6+	ITEM #	1-5	6+
2 3/8"	10"	3 1/2"	1.5	370468	\$56	\$51	370478	\$70	\$63	370488	\$70	\$63	370498	\$81	\$71	370508	\$70	\$63
3"	10"	2 3/4"	1.5	370469	56	51	370479	70	63	370489	70	63	370499	81	71	370509	70	63
3"	16"	5 3/4"	1.5	370470	91	84	370480	114	104	370490	114	104	370500	128	120	370510	114	104
4"	16"	5 3/4"	1.8	370471	91	84	370481	114	104	370491	114	104	370501	128	120	370511	114	104
5"	16"	6 1/4"	1.7	370472	91	84	370482	114	104	370492	114	104	370502	128	120	370512	114	104
6"	16"	7 1/8"	1.7	370473	91	84	370483	114	104	370493	114	104	370503	128	120	370513	114	104
7"	16"	7 1/8"	1.6	370474	91	84	370484	114	104	370494	114	104	370504	128	120	370514	114	104
8"	16"	7 1/8"	1.6	370475	91	84	370485	114	104	370495	114	104	370505	128	120	370515	114	104
10"	22"	8 1/4"	3.3	370476	186	166	370486	211	193	370496	211	193	370506	229	208	370516	211	193
12"	26"	11"	4.9	370477	356	327	370487	400	356	370497	400	356	370507	416	371	370517	400	356

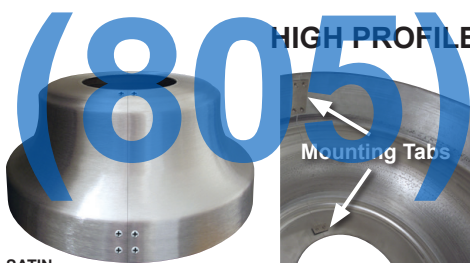
STANDARD PROFILE SPLIT ALUMINUM FLASH COLLARS WITH .060" WALL THICKNESS



A split collar can be useful when replacing or adding a collar to an installed flagpole without removing the pole from the foundation sleeve. The collar is split in half and mounting tabs with screws are installed on the under side of the collar. The quantity and size of the mounting tabs may vary depending on the size of the flash collar ordered.

SATIN

POLE DIA.	OUTSIDE DIA.	HT.	LBS.	SATIN			CLEAR			BRONZE #313			BLACK			WHITE		
				ITEM #	1-5	6+	ITEM #	1-5	6+	ITEM #	1-5	6+	ITEM #	1-5	6+	ITEM #	1-5	6+
2"	8"	2 1/4"	.55	370233	\$131	\$120	370643	\$133	\$131	370281	\$133	\$131	370306	\$144	\$140	370331	\$133	\$131
2 3/8"	8"	2 1/4"	.50	370234	131	120	370258	133	131	370282	133	131	370307	144	140	370332	133	131
2 1/2"	8"	2 1/4"	.50	370235	131	120	370644	133	131	370283	133	131	370308	144	140	370333	133	131
2"	12"	1 3/4"	.85	370236	133	131	370259	144	140	370284	144	140	370309	149	145	370334	144	140
2 3/8"	12"	1 3/4"	.85	370237	133	131	370260	144	140	370285	144	140	370310	149	145	370335	144	140
2 1/2"	12"	1 3/4"	.85	370238	133	131	370261	144	140	370286	144	140	370311	149	145	370336	144	140
3"	12"	1 3/4"	.90	370239	133	131	370262	144	140	370287	144	140	370312	149	145	370337	144	140
3 1/2"	12"	1 3/4"	.85	370240	133	131	370263	144	140	370288	144	140	370313	149	145	370338	144	140
4"	12"	1 3/4"	.80	370241	133	131	370264	144	140	370289	144	140	370314	149	145	370339	144	140
4 3/8"	12"	1 3/4"	.80	370242	133	131	370265	144	140	370290	144	140	370315	149	145	370340	144	140
5"	12"	1 3/4"	.80	370243	133	131	370266	144	140	370291	144	140	370316	149	145	370341	144	140
5 1/2"	12"	1 3/4"	.75	370244	133	131	370267	144	140	370292	144	140	370317	149	145	370342	144	140
6"	12"	1 3/4"	.70	370245	133	131	370268	144	140	370293	144	140	370318	149	145	370343	144	140
5"	16"	2 1/8"	1.9	370645	154	149	370646	171	165	370647	171	165	370648	183	174	370649	171	165
6"	16"	2 1/8"	1.9	370246	154	149	370269	171	165	370294	171	165	370319	183	174	370344	171	165
7"	16"	2 1/8"	1.9	370247	154	149	370270	171	165	370295	171	165	370320	183	174	370345	171	165
8"	16"	2 1/8"	1.8	370248	154	149	370271	171	165	370296	171	165	370321	183	174	370346	171	165
7"	22"	3 5/8"	3.0	370249	227	213	370272	268	255	370297	268	255	370322	275	259	370347	268	255
8"	22"	3 5/8"	3.2	370250	227	213	370273	268	255	370298	268	255	370323	275	259	370348	268	255
10"	22"	3 5/8"	3.4	370251	227	213	370274	268	255	370299	268	255	370324	275	259	370349	268	255
8"	30"	4 1/4"	6.4	370252	405	373	370275	474	441	370300	474	441	370325	487	453	370350	474	441
10"	30"	4 1/4"	5.9	370253	405	373	370276	474	441	370301	474	441	370326	487	453	370351	474	441
12"	30"	4 1/4"	5.8	370254	405	373	370277	474	441	370302	474	441	370327	487	453	370352	474	441
8"	38"	4 3/4"	8.0	370255	807	729	370278	885	807	370303	885	807	370328	948	865	370353	885	807
10"	38"	4 3/4"	7.4	370256	807	729	370279	885	807	370304	885	807	370329	948	865	370354	885	807
12"	38"	4 3/4"	7.2	370257	807	729	370280	885	807	370305	885	807	370330	948	865	370355	885	807



SATIN

HIGH PROFILE SPLIT 'TRUMPET' ALUMINUM FLASH COLLARS

Trumpet collars are generally used with flagpoles where a shoe base is welded to the bottom; however, these collars can be used on standard in-ground mounted flagpoles if a higher profile is desired. A split collar can be useful when replacing or adding a collar to an installed flagpole without removing the pole from the foundation sleeve. The collar is split in half and mounting tabs with screws are installed on the under side of the collar. The quantity and size of the mounting tabs may vary depending on the size of the flash collar ordered. Supplied in a standard wall thickness of .060". The chart below contains the combinations most commonly requested. For other combinations please contact us.

POLE DIA.	OUTSIDE DIA.	HT.	LBS.	SATIN			CLEAR			BRONZE #313			BLACK			WHITE		
				ITEM #	1-5	6+	ITEM #	1-5	6+	ITEM #	1-5	6+	ITEM #	1-5	6+	ITEM #	1-5	6+
2 3/8"	10"	3 1/2"	2.0	370518	\$174	\$168	370528	\$193	\$185	370538	\$193	\$185	370548	\$201	\$193	370558	\$193	\$185
3"	10"	2 3/4"	2.0	370519	174	168	370529	193	185	370539	193	185	370549	201	193	370559	193	185
3"	16"	5 3/4"	2.0	370520	212	202	370530	235	223	370540	235	223	370550	242	230	370560	235	223
4"	16"	5 3/4"	2.3	370521	212	202	370531	235	223	370541	235	223	370551	242	230	370561	235	223
5"	16"	6 1/4"	2.2	370522	212	202	370532	235	223	370542	235	223	370552	242	230	370562	235	223
6"	16"	7 1/8"	2.2	370523	212	202	370533	235	223	370543	235	223	370553	242	230	370563	235	223
7"	16"	7 1/8"	2.1	370524	212	202	370534	235	223	370544	235	223	370554	242	230	370564	235	223
8"	16"	7 1/8"	2.1	370525	212	202	370535	235	223	370545	235	223	370555	242	230	370565	235	223
10"	22"	8 1/4"	3.8	370526	308	288	370536	340	315	370546	340	315	370556	360	345	370566	340	315
12"	26"	11"	5.4	370527	474	439	370537	522	474	370547	522	474	370557	538	486	370567	522	474